

THERMAL DESORPTION

# APK 2600C

## CANISTER SAMPLER

### CANISTER MULTI SAMPLER

APK2600C Canister Multi-Sampler is compatible with APK720-OS to analyze the canister up to 8 automatically. Non-reactive sample lines is installed to minimize the loss of sample and it brings the accurate data.

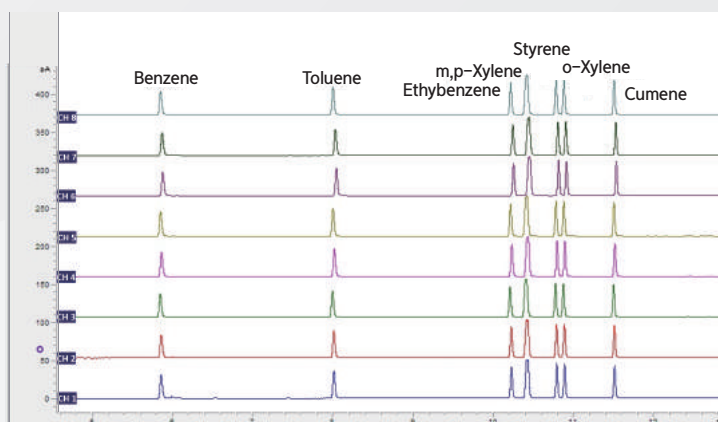
### FEATURES

- Minimize the degradation and loss of samples by using nonreactive materials
- Easily enable users to easily get repetitive, sequential, and selective analysis
- Perfect compatibility with third-party analyzers



### APPLICATION

- TD : APK 720R**  
Focusing :  $-20^{\circ}\text{C}$ , 10min  
Desorption :  $280^{\circ}\text{C}$ , 1min  
Injection :  $280^{\circ}\text{C}$ , 5min
- GC : PerkinElmer Clarus 600**  
Detector : FID  
Column : VB-624 (60m x 0.32mm x  $1.8\mu\text{m}$ )  
Oven Temp.  
- Initial Temp. :  $50^{\circ}\text{C}$  for 5min  
- Rate :  $10^{\circ}\text{C}/\text{min}$   
- Final Temp. :  $180^{\circ}\text{C}$  for 5min



### SPECIFICATION

SPECIFICATIONS	
Sample Port	8 Port (More than 8 Channels are available)
Sample Line Material	Silco Steel® or Sulfinert
Suitable Canister Capacity	6L Canister
PC Control	APK2600C Program
Signal I/O	Analyzer(GC) Ready In, TD Start Out
Dimension	1200 x 1200 x 1450 (W x D x H mm)
Power	220VAC, 50/60Hz, 1KW, 3A